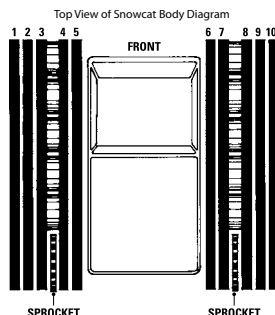


# Custom Belt Order Form

**Note:** When obtaining measurements from your current belting, please measure from the **center line** of the bolt holes.

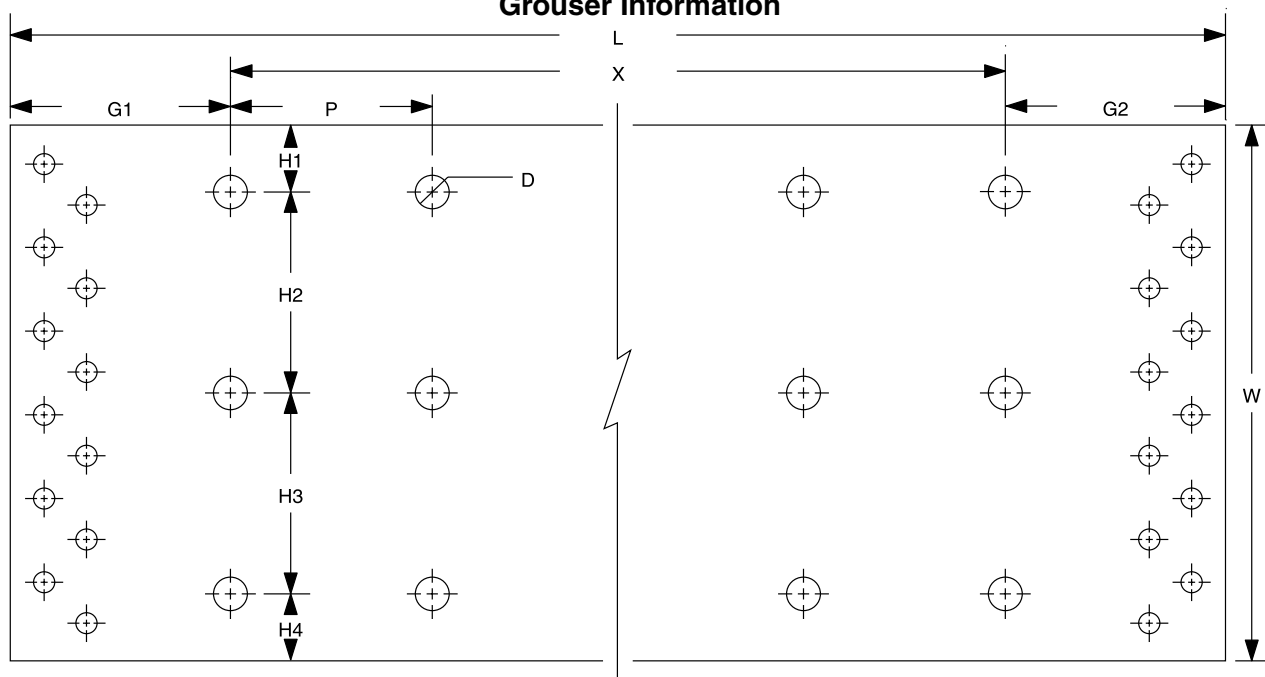
**Please provide an email address or a fax# in the contact information, so that we can forward a drawing of your edge for approval. An approved drawing is required before we begin production.**  
If you have any questions, please call us at 800.325.5463.

Machine Make \_\_\_\_\_  
Machine Model \_\_\_\_\_  
Number of Grousers \_\_\_\_\_  
Belt Position \_\_\_\_\_



Name \_\_\_\_\_  
Company \_\_\_\_\_  
PO# \_\_\_\_\_  
Department \_\_\_\_\_  
Email \_\_\_\_\_  
Tel \_\_\_\_\_ Ext. \_\_\_\_\_  
Fax \_\_\_\_\_

## Grouser Information



1. Number of fabric plies in current belt \_\_\_\_\_
2. Thickness of current belt \_\_\_\_\_
3. Overall width of belt (W) \_\_\_\_\_
4. Overall length of belt (L) \_\_\_\_\_
5. Rows of grouser holes in belt (X) \_\_\_\_\_ Is there a grouser on the lacing? \_\_\_\_\_
6. Pitch (Distance between one row of grouser holes to the next) (P) \_\_\_\_\_
7. Number of holes/belt needed for 1 grouser \_\_\_\_\_
8. Diameter of grouser holes (D) \_\_\_\_\_
9. Distance from end of belt to first row of grouser holes (G1) \_\_\_\_\_ (G2) \_\_\_\_\_
10. Distance from edge of belt to first grouser hole (H1) \_\_\_\_\_
11. Distance between first and second grouser hole (H2) \_\_\_\_\_
12. Distance between second and third grouser hole (if applicable) (H3) \_\_\_\_\_
13. Distance from edge of belt to last grouser hole (H4) \_\_\_\_\_

Once completed, fax to your FallLine Sales Representative at 775.827.6749 or email to [info@FallLine.com](mailto:info@FallLine.com)



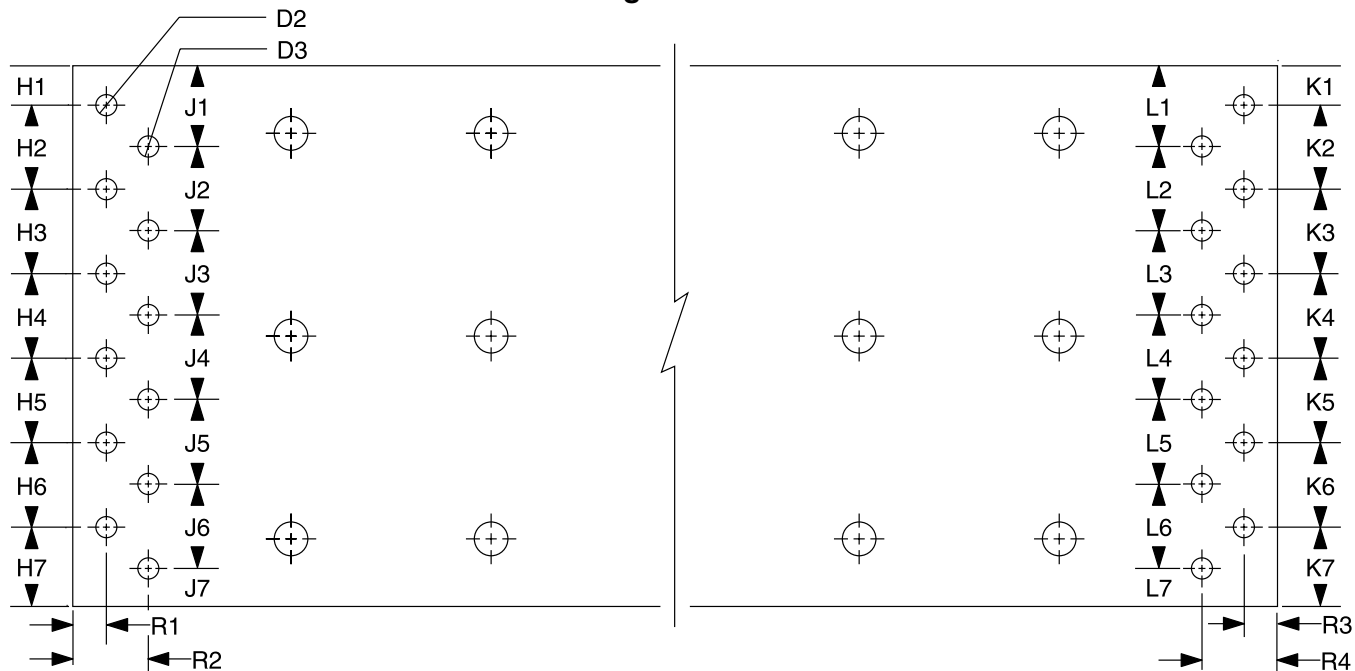
4625 Aircenter Circle • Reno, NV 89502  
Tel: 800.325.5463 • Fax: 775.827.6749 • [www.FallLine.com](http://www.FallLine.com) • [info@FallLine.com](mailto:info@FallLine.com)

# Custom Belt Order Form

**Note:** When obtaining measurements from your current belting, please measure from the **center line** of the bolt holes.

**Please provide an email address or a fax# in the contact information, so that we can forward a drawing of your edge for approval. An approved drawing is required before we begin production.**  
If you have any questions, please call us at 800.325.5463.

## Lacing Information



### Details for First Row of Lacing Holes

1. Number of lacing holes in first row \_\_\_\_\_
2. Diameter of lacing holes (D2) \_\_\_\_\_
3. Distance from end of belt to first row of lacing holes (R1) \_\_\_\_\_ (R3) \_\_\_\_\_
4. Distance from edge of belt and first lacing hole (H1) \_\_\_\_\_ (K1) \_\_\_\_\_
5. Distance from edge of belt and last lacing hole (H7) \_\_\_\_\_ (K7) \_\_\_\_\_
6. Please provide the distance between all applicable lacing holes:  
(H2) \_\_\_\_\_ (H3) \_\_\_\_\_ (H4) \_\_\_\_\_ (H5) \_\_\_\_\_ (H6) \_\_\_\_\_  
(K2) \_\_\_\_\_ (K3) \_\_\_\_\_ (K4) \_\_\_\_\_ (K5) \_\_\_\_\_ (K6) \_\_\_\_\_

### Details for Second Row of Lacing Holes (if applicable)

1. Number of lacing holes in second row \_\_\_\_\_
2. Diameter of lacing holes (D3) \_\_\_\_\_
3. Distance from end of belt to second row of lacing holes (R2) \_\_\_\_\_ (R4) \_\_\_\_\_
4. Distance from edge of belt and first lacing hole (J1) \_\_\_\_\_ (L1) \_\_\_\_\_
5. Distance from edge of belt and last lacing hole (J7) \_\_\_\_\_ (L7) \_\_\_\_\_
6. Please provide the distance between all applicable lacing holes:  
(J2) \_\_\_\_\_ (J3) \_\_\_\_\_ (J4) \_\_\_\_\_ (J5) \_\_\_\_\_ (J6) \_\_\_\_\_  
(L2) \_\_\_\_\_ (L3) \_\_\_\_\_ (L4) \_\_\_\_\_ (L5) \_\_\_\_\_ (L6) \_\_\_\_\_

Once completed, fax to your FallLine Sales Representative at 775.827.6749 or email to [info@FallLine.com](mailto:info@FallLine.com)



4625 Aircenter Circle • Reno, NV 89502

Tel: 800.325.5463 • Fax: 775.827.6749 • [www.FallLine.com](http://www.FallLine.com) • [info@FallLine.com](mailto:info@FallLine.com)